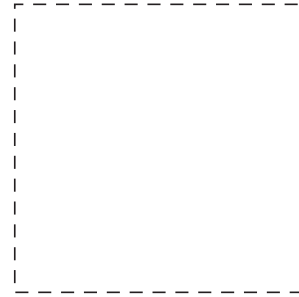
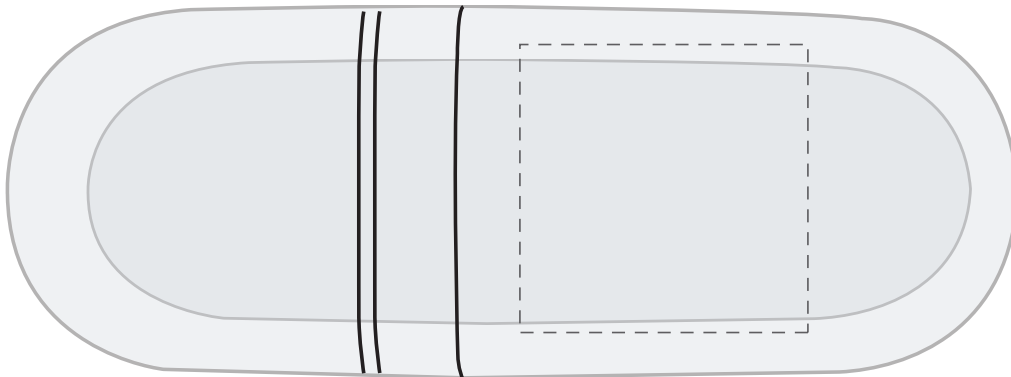


NEW PAD PRINT

F.P.O.



COMPOSITE ACTUAL SIZE



This item has been classified as a children's product as defined by the CPSIA of 2008, and as such requires certain tracking information to be present in order for the ultimate consumer to identify the origin of a product in the event of a product recall. In order to meet the CPSIA requirements, this item has the country of origin, and a unique tracking number molded and/or imprinted (see image).

Dashed Line For Imprint Area Only, Will Not Print.

DTP	Artist/Date:	Item #: 57	Proofing:
	Order #:	Max Imprint Size: 1 1/2"w x 1 1/2"h	
	Ship Date:	Imprint Type: SS, HT, Pad	
	Imprint Color:		
	Item Color:		

0" 0.5" 1"