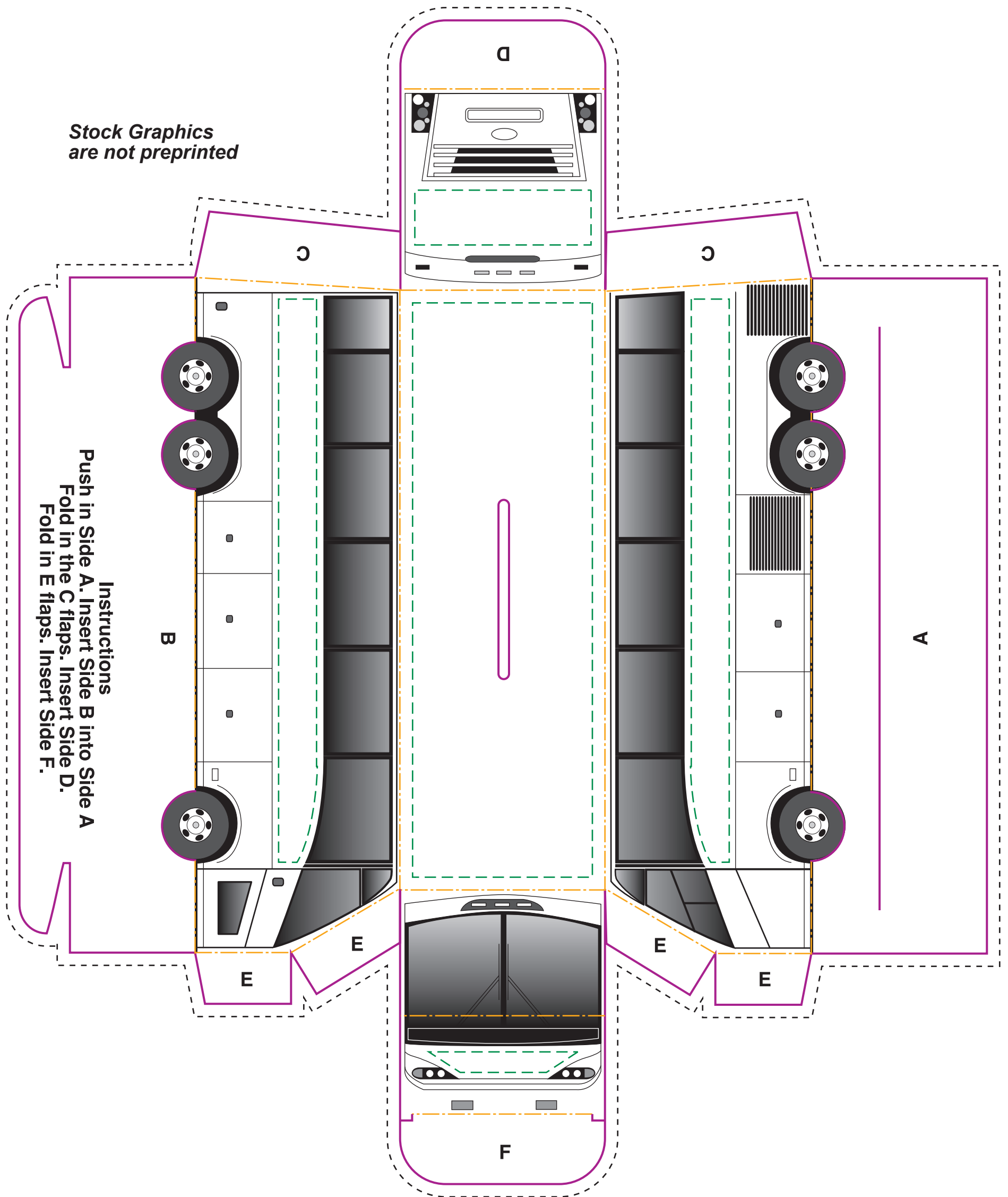


Actual size
 Width: 9.5 in.
 Height: 11.5 in.

**N-17
 Bus Bank**

- **Bleed Line**
 (1/8" offset from Die Line)
- **Die Line**
 (represents actual cut product)
- - - - **Live Area**
 (3/16" inset from Die Line)
- . - . **Fold**



Stock Graphics
 are not preprinted

Instructions
 Push in Side A. Insert Side B into Side A
 Fold in the C flaps. Insert Side D.
 Fold in E flaps. Insert Side F.

Please keep all text and graphics inside the Live Area unless the graphic element is intended to bleed. Borders, if included, should bleed outward from the Live Area.
 Please model spot colors using the Pantone solid coated Matching System
Please submit all Fonts and Links for output with your Final Composite.