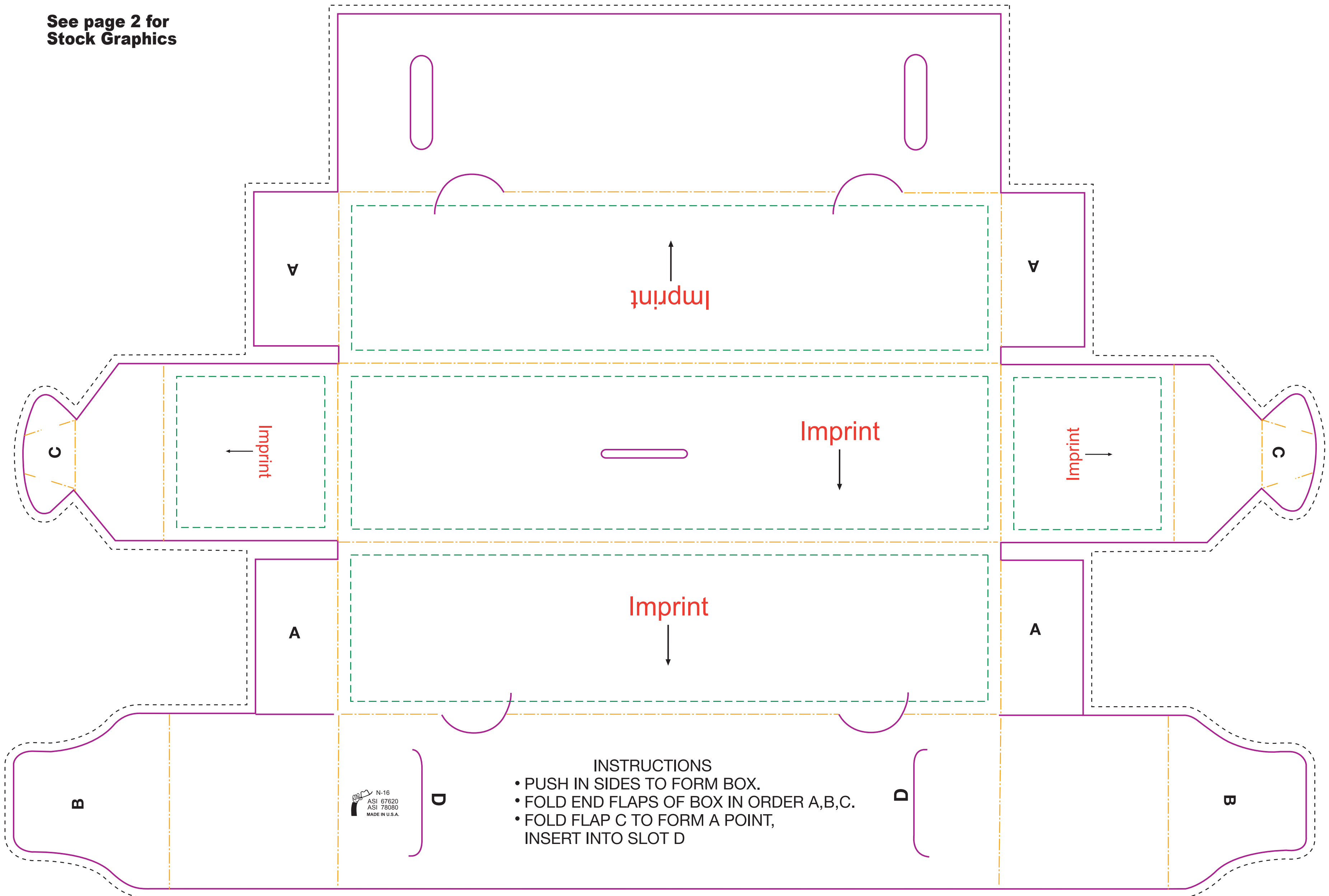


Actual size
Width: 19 in.
Height: 12.75 in.

N16
Bus Bank

- **Bleed Line**
(1/8" offset from Die Line)
- **Die Line**
(represents actual cut product)
- - - - **Live Area**
(3/16" inset from Die Line)
- . - . **Fold**

See page 2 for
Stock Graphics

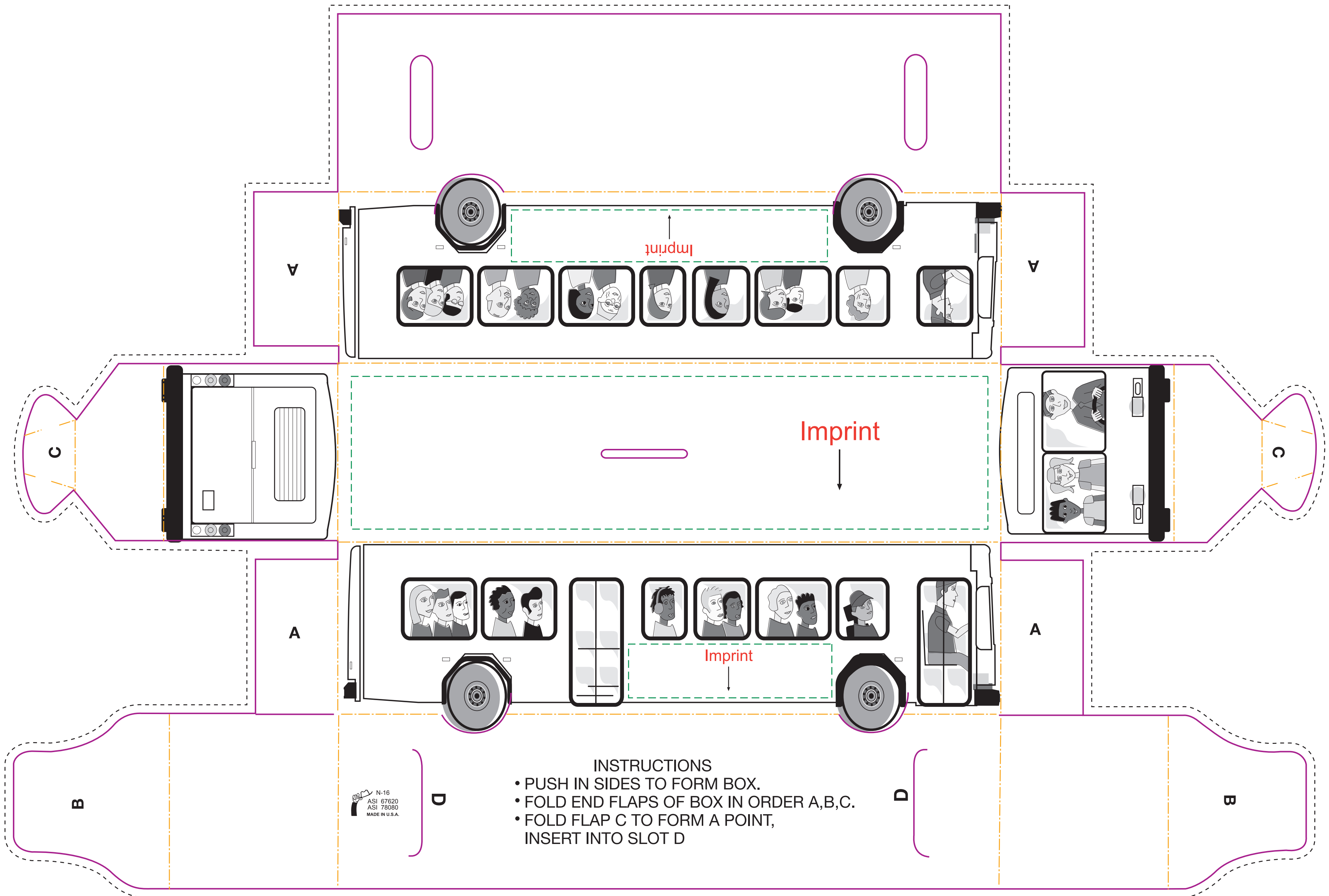


Please keep all text and graphics inside the Live Area unless the graphic element is intended to bleed. Borders, if included, should bleed outward from the Live Area. Please model spot colors using the Pantone solid coated Matching System. Please submit all Fonts and Links for output with your Final Composite.

Actual size
Width: 19 in.
Height: 12.75 in.

N16
Bus Bank

- **Bleed Line**
(1/8" offset from Die Line)
- **Die Line**
(represents actual cut product)
- - - - **Live Area**
(3/16" inset from Die Line)
- — — — **Fold**



INSTRUCTIONS

- PUSH IN SIDES TO FORM BOX.
- FOLD END FLAPS OF BOX IN ORDER A,B,C.
- FOLD FLAP C TO FORM A POINT, INSERT INTO SLOT D